

Futures Statement of Purpose



A stepping stone into adulthood.....

WHO WE ARE AND WHAT WE DO

Chailey Heritage Futures, part of Chailey Heritage Foundation is a person-centred transition service that provides 24-hour residential care for young people age 16-25 with complex physical disabilities and health needs and provides support of the development of life skills in preparation for adulthood.

We offer bespoke packages within a residential care environment designed to meet the individual care and health needs of young people in a homely, relaxed and safe environment. In addition, the young adults have access to specialist, clinical and nursing support provided by our NHS partners located on-site.

AIMS AND OBJECTIVES

Our Chailey Heritage Charter states that all children and young people have the following fundamental rights:

- 1. To be safe**
- 2. To be listened to**
- 3. To be respected as an individual**
- 4. To feel good about themselves**
- 5. To be as fit and healthy as possible**
- 6. To be encouraged to develop**

Our aim is to provide people with the skills, information and support they need to further develop their self-esteem, life skills, dignity and maturity, communication skills and to be encouraged to achieve greater independence. We will provide the support to enable each person to progress and work towards their own ambitions and aspirations by completing their Experience and Achievement folders. We will also support the young people to develop their understanding of and access to the local community.

Our vision is to ensure we provide a stimulating and inclusive environment where people are empowered to make informed choices and decisions about all aspects of their lives and where firm foundations are built for the future.

For the young people who are of school age, the vast majority attend Chailey Heritage School. Each class is grouped according to age and ability where a broad, balanced and stimulating curriculum is offered. Educational targets called 'My Next Steps' are set and agreed between the young person, the school teaching team and the young person's residential keyworker for learning to continue beyond the classroom. Enjoyment and engagement with learning are central to the ethos and vision of Chailey Heritage School, in addition to working towards each learner's potential at every stage of their education.

Person-centred and individualised timetables provide the young adults who have left school with a wide range of opportunities and activities to aid with their transition and development of life skills such as:

- Attending local college courses
- Support with volunteering, fundraising and work experience placements
- Development of communication skills using VOCAs such as Eye Gaze, TELUS
- User accessible switch work to promote independence
- Modern on-site facilities
- Futures Life Skills Centre
- Use of our modern Gym, Spa and Hydrotherapy Pool
- Immersive and Sensory space in our new Dream Centre
- Cookery sessions in a specially adapted fully accessible kitchen
- Recreational and leisure pursuits on-site and out in the community

- Arts and multi-media pursuits
- Transitional planning for the next stage of moving on
- Advocacy
- Wellbeing sessions e.g. massage, yoga, physio group sessions
- Music therapy
- Newly landscaped garden

Transitional planning is an important part of our work with the young adults and providing support with their next stage beyond Futures. Every young person has a transitional plan, which evolves with their wishes and aspirations, and we are committed to supporting the young people to achieve their maximum potential.

RESIDENTIAL HOLIDAYS

Our young people very much enjoy their residential holidays. Enjoying a variety of exciting activities. An outdoor activity center in the heart of Ashdown Forest, is a firm favourite where the young people are able to take part in some incredible activities including zip wiring, archery, climbing walls, and many more. Similarly, Flat Spaces in Hampshire offers our young people the opportunity to spend some time in a purpose built, disabled access holiday bungalow, whilst they explore the sights and attractions of the local area.

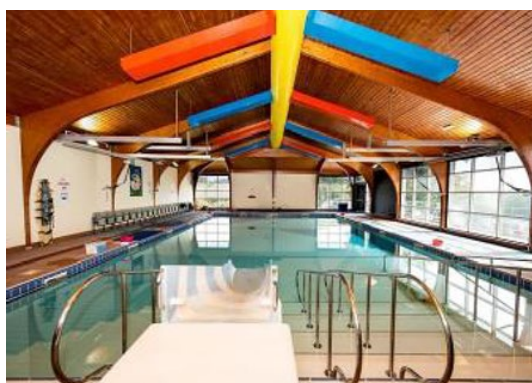


LOCATIONS AND REGULATED ACTIVITY

Chailey Heritage Futures consists of three bungalows; Willows, Orchard and Nightingale which are located on-site of Chailey Heritage Foundation, set within 18 acres in the heart of the beautiful Sussex countryside. The bungalows are designed to meet the complex needs of the young adults within a caring and homely atmosphere. All of the bungalows are wheelchair accessible and fitted with specialist overhead hoisting systems in the living areas, bedrooms and bathrooms.

The bungalows have substantial open-plan lounges and dining areas where the young people can socialise and relax. Each bungalow has its own kitchen where a housekeeper helps to prepare healthy and home cooked meals.

The young adults are given every opportunity to make use of a wide range of activities and resources located on-site such as the hydrotherapy pool, multi-sensory studio as well as the Futures Life Skills Centre and Hub located on-site. Regular shopping trips, excursions to local attractions and the nearby coast are made possible by our specially adapted vehicles and mini buses. The bungalows all have dedicated touch screen computers, PlayStations® and Nintendo Wiis®. iPads are also available for games and keeping in contact with friends and family via emails, Skype® and FaceTime®.



Living in the bungalows provides people with an age-appropriate environment and the opportunity to learn life skills and various aspects of running a home, planning and preparing meals, organising special events, outings, etc. The young adults are encouraged to make their own choices for socialising in the evenings and at the weekends. Regular movie nights, Advocacy Group sessions, trips to concerts, restaurants, the theatre, going to the pub are just a few of the many different outings they may wish to take part in.

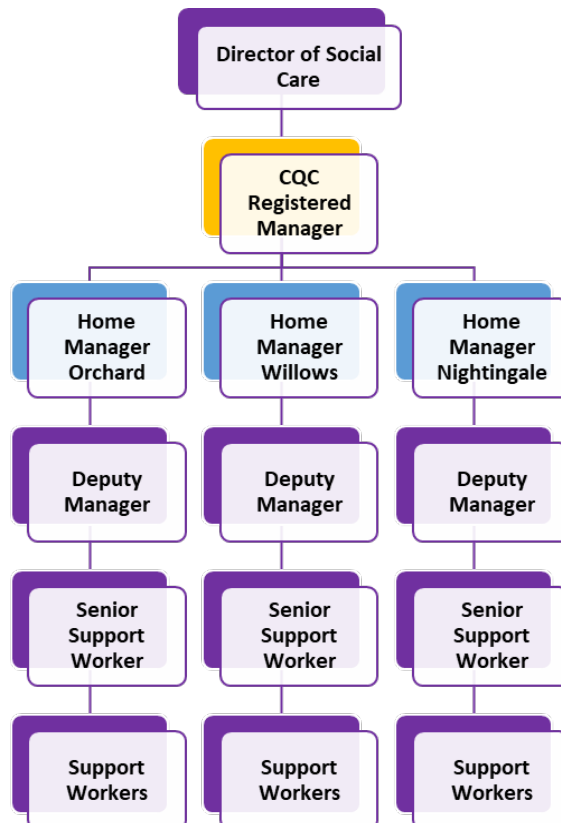
Chailey Heritage Futures is registered with the Care Quality Commission and is able to carry out the following regulated activity and service type:

- *Accommodation for persons who require nursing or personal care*
- *Young People from 16 years of age*
- *Physical Disability*
- *Learning Disability or Autistic Spectrum Disorder*
- *Sensory Impairment*



Individual teams of support workers, senior support workers, deputy managers, and house managers run each of the Futures bungalows. The teams provide 24-hour care backed by the nursing staff from our partners, Chailey Clinical Services (part of Sussex Community NHS Foundation Trust) located on-site. Chailey Clinical Services provide services such as specialists, nurses, speech and language therapists, physiotherapists, occupational therapists and rehabilitation engineers who can oversee the medical and therapeutic needs of the young adults living with us.

STAFF STRUCTURE



The Registered Manager supported by the senior management team undertakes quality assurance, monitoring of standards and works in partnership with the clinical team from Chailey Clinical Services.

We aim to develop staff to their full potential, by doing so optimising their contribution to the success of the Foundation. All Chailey Heritage Futures staff access the Workforce Diplomas externally and each Futures House Manager holds a *NCFE CACHE Level 5 Diploma in Leadership for Health and Social Care and Children and Young People's Services – Adults' Residential Management Pathway*.



Our highly skilled and trained teams follow a comprehensive Induction Programme and all support staff are expected to complete the Care Certificate within their first three months.

Within a 3-6 month period, more specialised training such as Gastrostomy, Epilepsy, and Preparation of Medication training, provided by the nursing team from Chailey Clinical Services (part of Sussex Community NHS Foundation Trust) takes place to best support the needs of the young adults in our care.

CONTACT DETAILS

Registered Provider Details

Chailey Heritage Foundation
Haywards Heath Road
North Chailey
Lewes
East Sussex
BN8 4EF
T - 01825 724444
E – futuresadmin@chf.org.uk

Chailey Heritage Foundation is a Registered Charity
Registered charity (number 1075837)

Nominated individual – Dee Anand
CQC Registered Manager – Karen Hopkins



Sussex Community **NHS**
NHS Foundation Trust

Proud to be working with our partners, Sussex Community NHS Foundation Trust, Chailey Clinical Services, to deliver properly integrated, highly specialist services to meet education, health and care needs.

Chailey Heritage Futures is part of Chailey Heritage Foundation, a pioneering charity providing education, care and transition services for children and young people with complex physical disabilities and health needs.



chaileyheritagefoundation



chaileyheritagefoundation



chaileyheritagefoundation



Chailey Heritage Foundation

Haywards Heath Road
North Chailey, Lewes
East Sussex BN8 4EF

t: 01825 724444
e: office@chf.org.uk
www.chf.org.uk